

# Welcome to Independence

Kansas ★ Established 1869

## Neewollah

(877) 633-9655 ★ [www.neewollah.com](http://www.neewollah.com)

Independence is proud to be the home of the state's oldest and largest annual celebration! Held the last full week of October, Neewollah's musical stage shows, carnival, concessions, entertainment and grand parade attract more than 60,000 visitors each year.



## Bronze Sculptures Tour

(620) 331-1890 ★ [www.indkschamber.org](http://www.indkschamber.org)

Throughout our community - downtown, at the museum, the Civic Center, Independence Public Library, and around Riverside Park - stand beautiful statues, street clocks and pedestrian benches donated by many residents of Independence, past and present. Pick up a brochure at the Chamber of Commerce, 616 N. Penn. Avenue.



## Shulthis Stadium

(620) 331-1890 ★ [www.indkschamber.org](http://www.indkschamber.org)

The first night game in organized baseball took place in Independence on April 28, 1930. A replica baseball stadium was built in 2016 to commemorate the historic event and the famous baseball players that played in Independence. Mickey Mantle played his first professional baseball game for the Independence Yankees. Located in Riverside Park, the stadium and its history are open to the public during park hours. Admission is free.





# Independence

Kansas ★ Established 1869

## William Inge Theater Festival

(620) 332-5491 ★ [www.ingecenter.org](http://www.ingecenter.org)

The nation's most accomplished playwrights have traveled to the William Inge Theater Festival to be honored: Stephen Sondheim, Neil Simon, and August Wilson are among these stellar writers. Sponsored each spring by Independence Community College, the Inge Festival, the Official Theater Festival of Kansas, celebrates native son and Pulitzer Prize-winning writer William Inge. You can visit his boyhood home at 514 N. 4th Street and the Inge Collection at the college library.



## Elk City Reservoir & State Park

(620) 331-6295 ★ [ksoutdoors.com/State-Parks/Locations/Elk-City](http://ksoutdoors.com/State-Parks/Locations/Elk-City)

Located 5 miles northwest of Independence, this beautiful reservoir and state park sets the stage for a variety of outdoor activities including hunting, fishing, camping, boating, and hiking. Primitive and full hook-up campsites are available. Open all year. Kansas Department of Wildlife, Parks & Tourism fees are applicable.



## Historical Homes & Sites

(620) 331-1890 ★ [www.indkschamber.org](http://www.indkschamber.org)

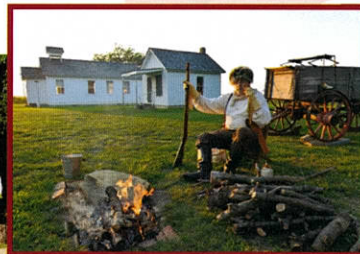
Legend has it that before the Great Depression, Independence had more millionaires per capita than any other place in the United States. Standing as testimonies to that legend are the stately mansions and historic homes that line its streets. Independence is also home to a renovated and expanded Carnegie Library. Visit our historic downtown district and pick up a Historic Homes Tour brochure at the Chamber of Commerce office, 616 N. Penn. Avenue.



## Little House on the Prairie Museum

(620) 289-4238 ★ [www.littlehouseontheprairiemuseum.com](http://www.littlehouseontheprairiemuseum.com)

Sitting just 13 miles southwest of Independence, the site includes a log cabin located near the original homestead where Laura Ingalls Wilder lived as a child. It also includes an 1872 schoolhouse, post office and gift shop. Admission is \$5 for adults; \$1 for children. Little House on the Prairie Museum is open mid March-October, Mon.-Sat. 10 a.m. to 5 p.m. and Sun. 1 p.m. to 5 p.m. It is also the host of the Prairie Days Festival, held the second Saturday each June.





## Riverside Park & Ralph Mitchell Zoo

(620) 332-2512 ★ [www.independencexs.gov/199/park-zoo](http://www.independencexs.gov/199/park-zoo)

FREE ADMISSION

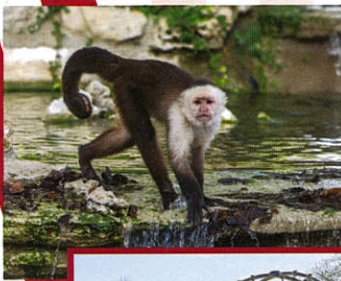
**Riverside Park** - This 124-acre showcase, located at Park Blvd. & Oak Street, features playgrounds, picnic shelters, rental facilities, a miniature golf course, antique carousel and a miniature train. The Mid-Continent Band plays at the band shell every Tuesday evening through the summer at 8 p.m. Riverside Park is open year-round. Visit the website for days and hours of operation.

**Ralph Mitchell Zoo** - Located next to Riverside Park, the zoo provides a natural habitat for a wide variety of animals including a cougar, bears, monkeys, reptiles, large hoof stock and a variety of birds.

## Riverside Beach Family Aquatic Center

(620) 331-4620 ★ (620) 331-0260 ★ [www.indyrec.com](http://www.indyrec.com)

Riverside Beach Family Aquatic Center is the spot for summer fun and relaxation! Located at 5th & Oak Street, the outdoor aquatic center is a 12,775 square foot facility; home to water slides, a leisure pool, 388,979 gallons of water and lots of family fun all summer long! The pool is open from June to August. Visit the website for days and hours of operation.



## Sports & Leisure

### Golf

Independence  
Country Club  
2824 Country Club Circle  
(620) 331-1270

### Hiking Trails

Elk City State Park  
5 miles NW of  
Independence  
(620) 331-6295

### Theater

Independence Cinemas  
121 W. Laurel St.  
(620) 331-6892  
[www.independencecinemas.com](http://www.independencecinemas.com)

### Disc Golf

Pride Park Disc  
Golf Course  
South 10th St.

ICC Disc Golf Course  
101 Evergreen St.

### Swimming Pools

Ash Youth Center (indoor)  
1501 N. 10th St.  
(620) 331-0260

Riverside Beach Family  
Aquatic Center  
5th & Oak St.  
(620) 331-4620  
(620) 331-0260

### Skate Boarding

Skateboard Park  
Penn. Ave. & Railroad St.

### Tennis

Ken Brown Tennis Courts  
Riverside Park  
5th & Oak St.  
(620) 332-2512

### Recreation Center

Ash Youth Center  
1501 N. 10th St.  
(620) 331-0260

### Miniature Golf

Riverside Park  
Park Blvd. & Oak St.  
(620) 332-2512

### Ball Parks

North Park Sports  
Complex - Bicentennial,  
Clark James, Hugo, Jaycee,  
& Sinclair Fields  
911 N. Park Blvd.

ARCO Sports Complex  
Emerson & Volunteer Fields  
700 S. 10th St.